

PRODUCT OVERVIEW
CABLE GLANDS AND ACCESSORIES

Jacob

About us

The basis of our success story was founded in 1922: Wilhelm Jacob begins in the West of Stuttgart with the production of brass turning parts for the electric industry on Fasson automatic turning machines. At this time he already presents his company at the Leipzig exhibition and established contacts for the business abroad.

Continuous growth and the expansion of the production programmes require continuous removals. Over Fellbach and Waiblingen the way finally ends in Kernen-Rommelshausen.

At this location we combine the consolidated business of the company - and we have enough space for future extensions.



Today we produce on modern injection moulding machines and with CNC-multi-spindle-turning machines. Our 200 employees develop, manufacture and distribute cable glands in brass, stainless-steel and plastic. An additional focus of our company: For more than 25 years we produce measuring technology. We provide standard-product lines as well as customized solutions for specific applications.

Our products are being used worldwide - by now we deliver in 70 countries. Whether in the electro industry, for panel building, machine building or at the electro wholesaler:

As your competent partner we offer extensive customer service and support. Our complete production is "Made in Germany" and guarantees highest quality!



We know, that flexibility and velocity is important for the satisfaction of our customers. Our new logistic and production centre enables us to deliver the goods in time. That is our understanding of best possible service.

Until now the descendants of the company's founder take influence.

For us, tradition and continuity do not exclude each other. We feel obligated to our customers.



PERFECT cable gland

50.6xx M / 50.0xx

Configuration

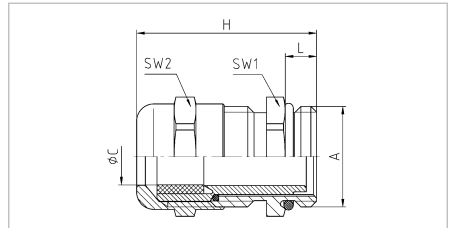
Dome nut	Brass CuZn39Pb3, nickel-plated
Lamellar insert	Polyamide PA6 V-2
Sealing ring	Polychloroprene-Nitrile rubber CR/NBR
Gland body	Brass CuZn39Pb3, nickel-plated
O-ring	Nitrile rubber NBR




Properties

Temperature range	-20°C / +100°C
Protection grade	IP68 - 5 bar

integrated anchorage,
protection against twisting,
wide sealing and clamping range,
easy-to-install,



Characteristics

A	ø C mm	E_{22} L mm	SW1 mm	SW2 mm	H mm		Part No.
M12x1,5	3 - 6	5	14	14	25	100	50.612 M
M16x1,5	5 - 9	5	17	17	30	100	50.616 M
M20x1,5	9 - 13	6	22	22	33,5	100	50.620 M
M25x1,5	11 - 16	7	27	27	36,5	50	50.625 M
M32x1,5	14 - 21	8	34	34	38	25	50.632 M
M40x1,5	19 - 27	8	43	43	41	10	50.640 M
M50x1,5	24 - 35	9	55	55	49,5	5	50.650 M
M63x1,5	32 - 42	10	65	65	52,5	5	50.663 M
M63x1,5	38 - 48	10	65	65	52,5	5	50.663 M1
Pg 7	3 - 6,5	5	14	14	24	100	50.007
Pg 9	4 - 8	6	17	17	29	100	50.009
Pg 11	5 - 10	6	20	20	29,5	50	50.011
Pg 13,5	6 - 12	6,5	22	22	31,5	50	50.013
Pg 16	10 - 14	6,5	24	24	31,5	50	50.016
Pg 21	13 - 18	7	30	30	34	50	50.021
Pg 29	18 - 25	8	40	40	39	25	50.029
Pg 36	24 - 32	9	50	50	45	10	50.036
Pg 42	30 - 38	10	57	57	49	5	50.042
Pg 48	34 - 44	10	64	64	52	5	50.048

PERFECT EMC-cable gland

50.6xx M/EMV / 50.0xx/EMV / 50.1xx/EMV/R

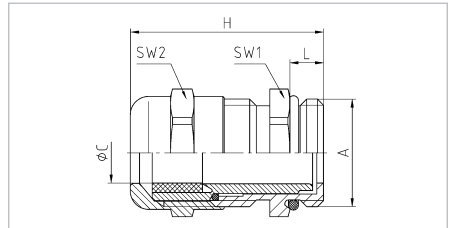
Configuration

Dome nut	Brass CuZn39Pb3, nickel-plated
Lamellar insert	Polyamide PA6 V-2
Sealing ring	Polychloroprene-Nitrile rubber CR/NBR
Gland body	Brass CuZn39Pb3, nickel-plated
O-ring	Nitrile rubber NBR


Properties

Temperature range	-20°C / +100°C
Protection grade	IP68 - 5 bar

for cables with shielding,
integrated anchorage,
protection against twisting,
wide sealing and clamping range,



Characteristics

A	Ø C mm	E_{EMV} L mm	SW1 mm	SW2 mm	H mm		Part No.
M12x1,5	3 - 6	5	14	14	25	100	50.612 M/EMV
M16x1,5	5 - 9	5	17	17	30	100	50.616 M/EMV
M20x1,5	9 - 13	6	22	22	33,5	100	50.620 M/EMV
M25x1,5	11 - 16	7	27	27	36,5	50	50.625 M/EMV
M32x1,5	14 - 21	8	34	34	38	25	50.632 M/EMV
M40x1,5	19 - 27	8	43	43	41	10	50.640 M/EMV
M50x1,5	24 - 35	9	55	55	49,5	5	50.650 M/EMV
M63x1,5	32 - 42	10	65	65	52,5	5	50.663 M/EMV
M63x1,5	38 - 48	10	65	65	52,5	5	50.663 M1/EMV
Pg 7	3 - 6,5	5	14	14	24	100	50.007/EMV
Pg 9	4 - 8	6	17	17	29	100	50.009/EMV
PG 11	5 - 10	6	20	20	29,5	100	50.011/EMV
Pg 13,5	6 - 12	6,5	22	22	31,5	50	50.013/EMV
Pg 16	10 - 14	6,5	24	24	31,5	50	50.016/EMV
Pg 21	13 - 18	7	30	30	34	25	50.021/EMV
Pg 29	18 - 25	8	40	40	39	25	50.029/EMV
Pg 36	24 - 32	9	50	50	45	10	50.036/EMV
Pg 42	30 - 38	10	57	57	49	5	50.042/EMV
Pg 48	34 - 44	10	64	64	52	5	50.048/EMV
NPT 3/8"	3 - 9	8	20	20	33	100	50.138/EMV/R*
NPT 1/2"	5 - 13	10	24	24	37,5	100	50.112/EMV/R*
NPT 3/4"	8 - 16	11	30	30	40,5	50	50.134/EMV/R*
NPT 1"	12 - 21	14	40	40	44	50	50.110/EMV/R*
NPT 1 1/4"	16 - 27	14	50	50	47	25	50.1114/EMV/R*

* Construction different from drawing above

PERFECT EMC-cable gland

50.6xx M/EMVD

Configuration

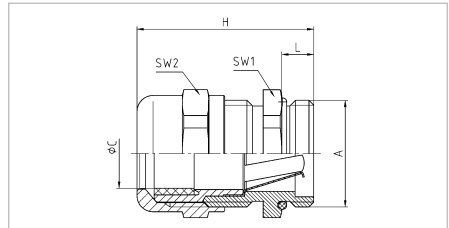
Dome nut	Brass CuZn39Pb3, nickel-plated
Lamellar insert	Polyamide PA6 V-2
Sealing ring	Polychloroprene-Nitrile rubber CR/NBR
Contact spring	Stainless steel
Gland body	Brass CuZn39Pb3, nickel-plated
O-ring	Nitrile rubber NBR




Properties

Temperature range	-20°C / +100°C
Protection grade	IP68

integrated anchorage,
protection against twisting,
wide sealing and clamping range,



Characteristics

A	ø C mm	E_{22} L mm	SW1 mm	SW2 mm	H mm		Part No.
M16x1,5	5 - 9	5	17	17	30	100	50.616 M/EMVD
M20x1,5	9 - 13	6	22	22	33,5	100	50.620 M/EMVD
M25x1,5	11 - 16	7	27	27	36,5	50	50.625 M/EMVD
M32x1,5	14 - 21	8	34	34	38	25	50.632 M/EMVD
M40x1,5	19 - 27	8	43	43	41	10	50.640 M/EMVD
M50x1,5	24 - 35	9	55	55	49,5	5	50.650 M/EMVD
M63x1,5	32 - 42	10	65	65	52,5	5	50.663 M/EMVD



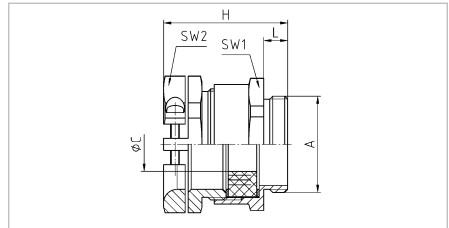
for cables with shielding,
quick and easy EMC connection
of the cable shield via the
contacting spring with
the gland body and
the housing potential,
integrated anchorage

Configuration


Pressure screw	Brass CuZn39Pb3, nickel-plated
Bolts	Stainless steel
Washers	Steel, zinc-plated
Sealing ring	SBR/NBR, multiple perforation
Gland body	Brass CuZn39Pb3, nickel-plated

Properties

	increased, central anchorage
Temperature range	-30°C / +100°C
Protection grade	IP55



Characteristics

A	ø C mm	$\frac{E_{22}}{L}$ L mm	SW1 mm	SW2 mm	H mm		Part No.
M12x1,5	5,5 - 7	6	14	16	29,5	100	19.507M12
M12x1,5	6,5 - 8	6	17	19	30	100	19.509M12
M16x1,5	7,5 - 11,5	6	20	22	32	50	19.511M16
M20x1,5	7,5 - 11,5	6,5	22	22	33	50	19.511M20
M20x1,5	8,5 - 11,5	6,5	22	24	33	50	19.513M20
M25x1,5	11,5 - 14,5	7	27	26	35,5	50	19.516M25
M25x1,5	12 - 18,5	7	30	33	39,5	50	19.521M25
M32x1,5	19 - 26,5	8	40	42	42,5	25	19.529M32
M40x1,5	19 - 26,5	8	43	42	42,5	25	19.529M40
M50x1,5	26,5 - 32,5	9	55	52	50	10	19.536M50
M50x1,5	30 - 38,5	9	57	59	53	5	19.542M50
M63x1,5	35 - 44,5	10	65	64	55	5	19.548M63
Pg 7	5,5 - 6,5	5	14	16	27	100	19.507
Pg 9	7 - 10	6	17	19	30,5	100	19.509
Pg 11	8 - 12	6	20	22	32	50	19.511
Pg 13,5	9 - 13	6,5	22	24	33	50	19.513
Pg 16	10 - 15	6,5	24	26	34,5	50	19.516
Pg 21	12,5 - 19	7	30	34	39	50	19.521
Pg 29	19 - 27	8	40	42	42,5	50	19.529
Pg 36	26 - 33	9	50	52	50	25	19.536
Pg 42	30,5 - 39	10	57	59	54	25	19.542
Pg 48	35 - 45	10	64	64	55	10	19.548

* Clamping range of anchorage

BASIC cable gland

63xxMxxUG / 63xx UG

Configuration

Pressure screw Brass CuZn39Pb3, nickel-plated
 Washers Steel, zinc-plated
 Sealing ring SBR/NBR, multiple perforation
 Gland body Brass CuZn39Pb3, nickel-plated

Properties

wide sealing range, for application in installation sectors without special requirements,

Temperature range

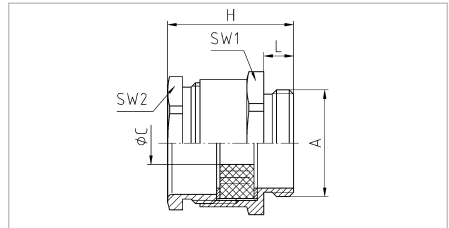
-30°C / +100°C

Protection grade


IP55

Comment

cable gland sizes M12x1,5 to M25x1,5 and Pg 9 to Pg 21 with silicone rubber sealing for larger temperature range (-55°C / +175°C) are available upon request



Characteristics

A	ø C mm	E_{22} L mm	SW1 mm	SW2 mm	H mm		Part No.
M12x1,5	4 - 8	6	17	15	22,5	100	6309M12UG
M16x1,5	6 - 12	6	20	18	23,5	100	6311M16UG
M20x1,5	6 - 12	6,5	22	18	24	50	6311M20UG
M20x1,5	8 - 13	6,5	22	20	25,5	50	6313M20UG
M25x1,5	7 - 15	7	27	22	27	50	6316M25UG
M25x1,5	9 - 19	7	30	28	29,5	50	6321M25UG
M32x1,5	17 - 27	8	40	37	32,5	25	6329M32UG
M40x1,5	17 - 28	8	43	37	32,5	25	6329M40UG
M50x1,5	23 - 33	9	55	47	38,5	10	6336M50UG
M50x1,5	29 - 39	9	57	54	42,5	5	6342M50UG
M63x1,5	35 - 46	10	65	60	45	5	6348M63UG
Pg 9	4 - 10	6	17	15	22,5	100	6309 UG
Pg 11	6 - 12	6	20	18	23,5	50	6311 UG
Pg 13,5	6 - 13	6,5	22	20	25,5	50	6313 UG
Pg 16	6 - 16	6,5	24	22	26,5	50	6316 UG
Pg 21	9 - 20	7	30	28	29,5	50	6321 UG
Pg 29	17 - 28	8	40	37	33	25	6329 UG
Pg 36	23 - 34	9	50	47	39	10	6336 UG
Pg 42	29 - 40	10	57	54	44,5	5	6342 UG
Pg 48	35 - 47	10	64	60	46	5	6348 UG

Hexagonal locknut

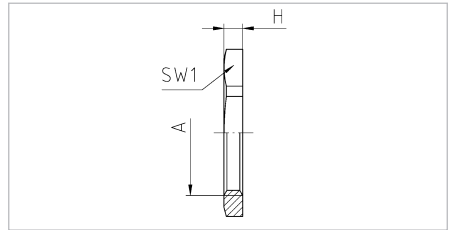
50.2xx M / 2xx M / 2xx MNPT

Configuration


Hexagonal locknut Brass CuZn39Pb3, nickel-plated

Properties

Temperature range for secure tightening of cable glands and accessories up to +200°C



Characteristics

A	SW1 mm	H mm		Part No.
M12x1,5	15	2,8	100	50.212 M
M16x1,5	19	2,8	100	50.216 M
M20x1,5	24	3	100	50.220 M
M25x1,5	30	3,5	100	50.225 M
M32x1,5	36	4	100	50.232 M
M40x1,5	46	5	50	50.240 M
M50x1,5	60	5	50	50.250 M
M63x1,5	70	6	50	50.263 M
Pg 7	15	2,8	100	207 M
Pg 9	18	2,8	100	209 M
Pg 11	21	3	100	211 M
Pg 13,5	23	3	100	213 M
Pg 16	26	3	100	216 M
Pg 21	32	3,5	100	221 M
Pg 29	41	4	100	229 M
Pg 36	51	5	50	236 M
Pg 42	60	5	50	242 M
Pg 48	64	5,5	50	248 M
NPT 3/8"	22	5	50	238 MNPT
NPT 1/2"	24	6	25	212 MNPT
NPT 3/4"	30	7	25	234 MNPT

Hexagonal locknut

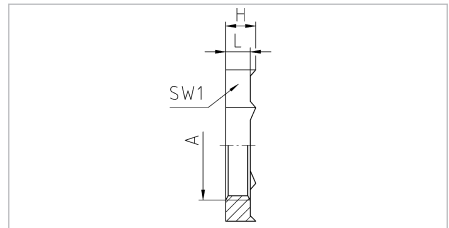
50.2xx MPOT / 2xx MPOT

Configuration


Hexagonal locknut Brass CuZn39Pb3, nickel-plated

Properties

with cutting edges for secure tightening of EMC-cable glands, ensuring optimal contact for equipotential bonding, increased vibration resistance, Temperature range up to +200°C



Characteristics

A	L mm	SW1 mm	H mm		Part No.
M12x1,5	4,5	15	5,5	100	50.212 MPOT
M16x1,5	4,5	19	5,5	100	50.216 MPOT
M20x1,5	4,5	24	5,5	100	50.220 MPOT
M25x1,5	4,5	30	5,5	100	50.225 MPOT
M32x1,5	4,5	36	5,5	100	50.232 MPOT
M40x1,5	5	46	6	50	50.240 MPOT
M50x1,5	5	60	6	50	50.250 MPOT
M63x1,5	6	70	7	50	50.263 MPOT
Pg 7	3,7	15	4,7	100	207 MPOT
Pg 9	3,7	18	4,7	100	209 MPOT
Pg 11	3,7	21	4,7	100	211 MPOT
Pg 13,5	3,7	23	4,7	100	213 MPOT
Pg 16	3,7	26	4,7	100	216 MPOT
Pg 21	4,2	32	5,2	100	221 MPOT
Pg 29	4,7	41	5,7	100	229 MPOT
Pg 36	5	51	6	50	236 MPOT
Pg 42	5	60	6	50	242 MPOT
Pg 48	5,5	64	6,5	50	248 MPOT

Screw plug

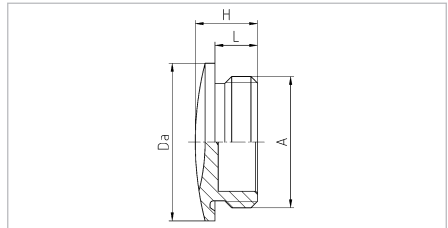
10.xx15 / 10xx M

Configuration


Screw plug Brass CuZn39Pb3, nickel-plated

Properties

Temperature range for secure sealing of unused threaded or clearance holes up to +200°C
 Protection grade IP54
 available with O-ring for increased protection grade



Characteristics

A	L mm	H mm	Da mm		Part No.
M12x1,0	4,5	7,5	16	100	10.1210
M12x1,5	5	8	16	100	10.1215
M16x1,5	6	9	20	100	10.1615
M20x1,5	6,5	9,5	24	100	10.2015
M25x1,5	7	11	28	100	10.2515
M32x1,5	8	12	35	50	10.3215
M40x1,5	8	12	45	50	10.4015
M50x1,5	9	15	55	25	10.5015
M63x1,5	10	16	68	10	10.6315
Pg 7	5	8	14	100	1007 M
Pg 9	6	9	17	100	1009 M
Pg 11	6	9	20	100	1011 M
Pg 13,5	6,5	9,5	22	100	1013 M
Pg 16	6,5	9,5	24	100	1016 M
Pg 21	7	11	30	100	1021 M
Pg 29	8	12	39	50	1029 M
Pg 36	9	15	50	25	1036 M
PG 42	10	16	57	25	1042 M
PG 48	10	16	64	10	1048 M

Reduction

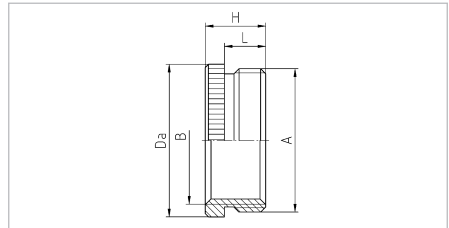
MxxMxx / xxxx RPg

Configuration


Reduction Brass CuZn39Pb3, nickel-plated

Properties

reduction of threaded or clearance holes to smaller thread size
 Temperature range up to +200°C
 Protection grade dependent on the combination with other components



Characteristics

A	B	L mm	H mm	Da mm		Part No.
M16x1,5	M12x1,5	6	8,5	20	100	M16M12
M20x1,5	M12x1,5	6,5	9	24	100	M20M12
M20x1,5	M16x1,5	6,5	9	24	100	M20M16
M25x1,5	M16x1,5	7	10	30	100	M25M16
M25x1,5	M20x1,5	7	10	30	100	M25M20
M32x1,5	M20x1,5	8	11,5	39	50	M32M20
M32x1,5	M25x1,5	8	11,5	39	50	M32M25
M40x1,5	M25x1,5	9	12,5	50	25	M40M25
M40x1,5	M32x1,5	9	12,5	50	25	M40M32
M50x1,5	M32x1,5	10	14	57	10	M50M32
M50x1,5	M40x1,5	10	14	57	10	M50M40
M63x1,5	M40x1,5	10	14	70	10	M63M40
M63x1,5	M50x1,5	10	14	70	10	M63M50
Pg 9	Pg 7	6	8,5	17	100	907
Pg 11	Pg 7	6	8,5	20	100	1107
Pg 11	Pg 9	6	8,5	20	100	1109
Pg 13,5	Pg 9	6,5	9	22	100	1309
Pg 13,5	Pg 11	6,5	9	22	100	1311
Pg 16	Pg 9	6,5	9,5	24	100	1609
Pg 16	Pg 11	6,5	9,5	24	100	1611
Pg 16	Pg 13,5	6,5	9,5	24	100	1613
Pg 21	Pg 11	7	10	30	100	2111
Pg 21	Pg 13,5	7	10	30	100	2113
Pg 21	Pg 16	7	10	30	100	2116
Pg 29	Pg 16	8	11,5	39	50	2916
Pg 29	Pg 21	8	11,5	39	50	2921
Pg 36	Pg 21	9	12,5	50	25	3621
Pg 36	Pg 29	9	12,5	50	25	3629
Pg 42	Pg 36	10	14	57	10	4236
Pg 48	Pg 36	10	14	64	10	4836

Configuration

Enlarger Brass CuZn39Pb3, nickel-plated

Properties

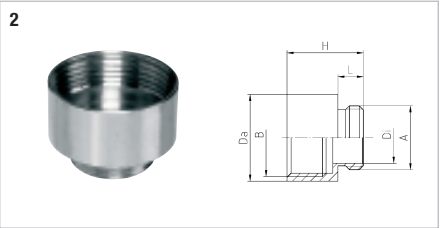
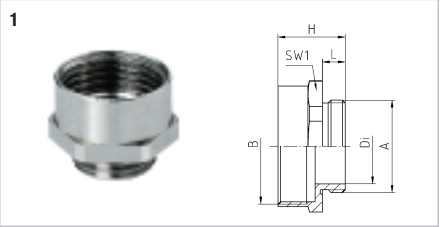
enlarger of threaded or clearance holes to larger thread sizes

Temperature range



up to +200°C

Protection grade

dependent on the combination with other components



Characteristics

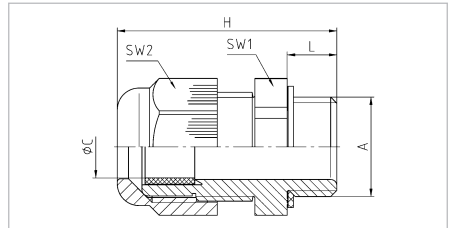
	A	B	L	SW1	H	Di		Part No.
1	M12x1,5	M16x1,5	5	18	16	8	100	M12M16/FR
	M16x1,5	M20x1,5	5	22	16,5	12	100	M16M20/FR
	M20x1,5	M25x1,5	6	27	18,5	15	50	M20M25/FR
	M25x1,5	M32x1,5	7	34	20,5	21	25	M25M32/FR
	M32x1,5	M40x1,5	8	42	23,5	26	25	M32M40/FR
	M40x1,5	M50x1,5	8	52	30	34	10	M40M50/FR
	M50x1,5	M63x1,5	9	65	32,5	44	10	M50M63/FR
	A	B	L	H	Da	Di		Part No.
2	Pg 7	Pg 9	5	15	17	10	100	709
	Pg 9	Pg 11	6	16,5	20	12	100	911
	Pg 9	Pg 13,5	6	17,5	22	12	100	913
	Pg 11	Pg 13,5	6	17,5	22	15	100	1113
	Pg 11	Pg 16	6,5	19	24	15	100	1116
	Pg 11	Pg 21	6,5	21	30	15	100	1121
	Pg 13,5	Pg 16	6,5	19	24	17	100	1316
	Pg 13,5	Pg 21	6,5	21	30	17	100	1321
	Pg 16	Pg 21	6,5	21	30	18,5	100	1621
	Pg 16	Pg 29	6,5	22,5	39	18,5	50	1629
	Pg 21	Pg 29	7	23	39	24	50	2129
	Pg 29	Pg 36	8	27,5	50	32	25	2936
	Pg 36	Pg 42	9	31	57	42	10	3642
	Pg 42	Pg 48	10	33	64	48	10	4248

PERFECT cable gland
50.6xx PAzzzz / 50.0xx PAzzzz / 50.1xx PAzzzz
Configuration

Dome nut Polyamide PA6 V-2
 Sealing ring Polychloroprene-Nitrile rubber CR/NBR
 Gland body Polyamide PA6 V-2

Properties

integrated anchorage,
 wide sealing and clamping range,
 easy-to-install,
 Temperature range -20°C / +100°C
 Protection grade IP68 - 5 bar


Characteristics

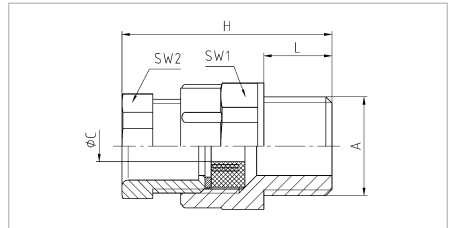
A	ø C mm	L mm	SW1 mm	SW2 mm	H mm		RAL 7001 silver grey Part No.	RAL 7035 light grey Part No.	RAL 9005 jet black Part No.
M12x1,5	3 - 6	8	15	15	31	100	50.612 PA7001	50.612 PA7035	50.612 PA/SW
M16x1,5	5 - 10	8	20	20	35,5	100	50.616 PA7001	50.616 PA7035	50.616 PA/SW
M20x1,5	8 - 13	8	24	24	36	100	50.620 PA7001	50.620 PA7035	50.620 PA/SW
M25x1,5	11 - 17	8	29	29	43	50	50.625 PA7001	50.625 PA7035	50.625 PA/SW
M32x1,5	15 - 21	10	36	36	50	25	50.632 PA7001	50.632 PA7035	50.632 PA/SW
M40x1,5	19 - 28	10	46	46	51	10	50.640 PA7001	50.640 PA7035	50.640 PA/SW
M50x1,5	27 - 35	12	55	55	61,5	5	50.650 PA7001	50.650 PA7035	50.650 PA/SW
M63x1,5	32 - 42	12	68	68	65,5	5	50.663 PA7001	50.663 PA7035	50.663 PA/SW
Pg 7	3 - 6,5	8	15	15	30,5	100	50.007 PA	50.007 PA7035	50.007 PA/SW
Pg 9	4 - 8	8	19	19	34	100	50.009 PA	50.009 PA7035	50.009 PA/SW
Pg 11	5 - 10	8	22	22	37	100	50.011 PA	50.011 PA7035	50.011 PA/SW
Pg 13,5	6 - 12	9	24	24	39	100	50.013 PA	50.013 PA7035	50.013 PA/SW
Pg 16	10 - 14	10	27	27	42,5	50	50.016 PA	50.016 PA7035	50.016 PA/SW
Pg 21	13 - 18	11	33	33	47,5	50	50.021 PA	50.021 PA7035	50.021 PA/SW
Pg 29	18 - 25	11	42	42	53	25	50.029 PA	50.029 PA7035	50.029 PA/SW
Pg 36	22 - 32	13	53	53	61	10	50.036 PA	50.036 PA7035	50.036 PA/SW
Pg 42	30 - 38	13	60	60	65	5	50.042 PA	50.042 PA7035	50.042 PA/SW
Pg 48	34 - 44	14	65	65	67	5	50.048 PA	50.048 PA7035	50.048 PA/SW
NPT 3/8"	5 - 10	15	22	22	44,5	100	50.138 PA		50.138 PA/SW
NPT 1/2"	6 - 12	14,5	24	24	45	100	50.11213 PA		50.11213 PA/SW
NPT 1/2"	10 - 14	15	27	27	47,5	100	50.112 PA		50.112 PA/SW
NPT 3/4"	14 - 18	15	33	33	52	50	50.134 PA		50.134 PA/SW
NPT 1"	19 - 25	18	42	42	60,5	25	50.110 PA		50.110 PA/SW
NPT 1 1/4"	22 - 32	18	53	53	69,5	10	50.114 PA		50.114 PA/SW

Configuration



Pressure screw	Polyamide PA6 GF30	1
	Polystyrene	2
Washer	Polyethylene PE-LD	
Sealing ring	SBR/NBR, multiple perforation	
Gland body	Polyamide PA6 GF30	1
	Polystyrene	2

Properties

	wide sealing range, for application in installation sectors without special requirements	
Temperature range	-30°C / +80°C	1
	-20°C / +70°C	2
Protection grade	IP55	



Characteristics

	A	ø C	$\frac{H}{mm}$	SW1	SW2	H		RAL 7035 light grey Part No. 
		mm	mm	mm	mm	mm		
1	M12x1,5	4 - 8	11	19	16	33	50	6309M12PAUG
	M16x1,5	4 - 9	11	19	16	34	50	6309M16PAUG
	M20x1,5	6 - 11	11	22	19	36	50	6311M20PAUG
	M20x1,5	6 - 13	11	24	21	36	50	6313M20PAUG
	M20x1,5	6 - 14	11	27	23	38,5	50	6316M20PAUG
	M25x1,5	6 - 15	11	27	23	40	50	6316M25PAUG
	M25x1,5	9 - 19	11	32	30	43	50	6321M25PAUG
	M32x1,5	9 - 19	10	36	30	38	25	6321M32PAUG
	M32x1,5	17 - 26	11	42	40	46,5	25	6329M32PAUG
	M40x1,5	17 - 27	11	42	40	45,5	10	6329M40PAUG
	M50x1,5	23 - 34	11	53	50	52	10	6336M50PAUG
	M50x1,5	29 - 40	11	60	55	57,5	10	6342M50PAUG
	M63x1,5	35 - 45	11	65	60	57,5	10	6348M63PAUG
	2	Pg 7	5 - 7	8	15	13	29	50
Pg 9		4 - 10,5	8	19	16	30	50	309 PG/UG
Pg 11		6 - 11,5	8	22	19	32,5	50	311 PG/UG
Pg 13,5		6 - 13	9	24	21	34,5	50	313 PG/UG
Pg 16		6 - 16	10	27	23	38	50	316 PG/UG
Pg 21		9 - 20	11	32	30	43,5	50	321 PG/UG
Pg 29		17 - 28	11	42	40	44,5	50	329 PG/UG
Pg 36		23 - 34	13	53	50	53,5	50	336 PG/UG

From M50x1,5 to M63x1,5 without glass fibre reinforcement

Hexagonal locknut

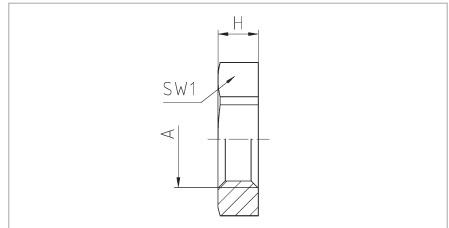
50.2xx PAzzzz / 2xx PG / 2xx PANPT/G

Configuration

Hexagonal locknut	Polyamide PA6 GF30	1
	Polystyrene	2

Properties

	for secure tightening of cable glands and accessories	
Temperature range	-20°C / +100°C	1
	-20°C / +70°C	2



Characteristics

Characteristics					RAL 7001 silver grey Part No.	RAL 7035 light grey Part No.	RAL 9005 jet black Part No.
	A	SW1 mm	H mm				
1	M12x1,5	17	5	100	50.212 PA7001	50.212 PA7035	50.212 PA/SW
	M16x1,5	22	5	100	50.216 PA7001	50.216 PA7035	50.216 PA/SW
	M20x1,5	27	6	100	50.220 PA7001	50.220 PA7035	50.220 PA/SW
	M25x1,5	32	6	100	50.225 PA7001	50.225 PA7035	50.225 PA/SW
	M32x1,5	41	7	100	50.232 PA7001	50.232 PA7035	50.232 PA/SW
	M40x1,5	50	7	50	50.240 PA7001	50.240 PA7035	50.240 PA/SW
	M50x1,5	60	8	50	50.250 PA7001	50.250 PA7035	50.250 PA/SW
	M63x1,5	75	8	50	50.263 PA7001	50.263 PA7035	50.263 PA/SW
2	Pg 7	19	5	100		207 PG	
	Pg 9	22	5	100		209 PG	
	Pg 11	24	5	100		211 PG	
	Pg 13,5	27	6	100		213 PG	
	Pg 16	30	6	100		216 PG	
	Pg 21	36	7	100		221 PG	
	Pg 29	46	7	100		229 PG	
	Pg 36	60	8	50		236 PG	
	Pg 42	65	8	50		242 PG	
	Pg 48	70	8	50		248 PG	
1	NPT 3/8"	22	5	100		238 PANPT/G	238 PANPTSW/G
	NPT 1/2"	27	6	100		212 PANPT/G	212 PANPTSW/G
	NPT 3/4"	36	7	100		234 PANPT/G	234 PANPTSW/G
	NPT 1"	42	7	100		210 PANPT/G	210 PANPTSW/G

From M40x1,5 to M63x1,5 without glass fibre reinforcement

Screw plug

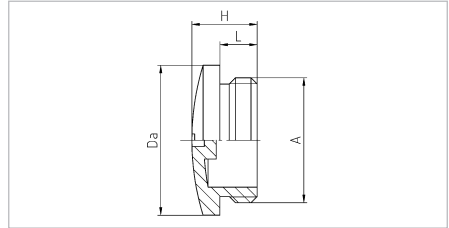
10.xx15 PAzzzz / 10xx PG

Configuration

Pressure screw	Polyamide PA6 GF30	1
	Polystyrene	2

Properties

	for secure sealing of unused threaded or clearance hole	
Temperature range	-30°C / +80°C	1
	-20°C / +70°C	2
Protection grade	IP54, higher protection grade possible if assembled with sealing ring	



Characteristics

	A	L mm	H mm	Da mm		RAL 7001	RAL 7035	RAL 9005
						silver grey Part No.	light grey Part No.	jet black Part No.
1	M12x1,5	6	10	15	100	10.1215 PA	10.1215PA7035	10.1215PA/SW
	M16x1,5	6	10,5	20	100	10.1615 PA	10.1615PA7035	10.1615PA/SW
	M20x1,5	6	10,5	24	100	10.2015 PA	10.2015PA7035	10.2015PA/SW
	M25x1,5	8	13	30	100	10.2515 PA	10.2515PA7035	10.2515PA/SW
	M32x1,5	8	13,5	37	100	10.3215 PA	10.3215PA7035	10.3215PA/SW
	M40x1,5	8	14	46	50	10.4015 PA	10.4015PA7035	10.4015PA/SW
	M50x1,5	10	16,5	56	50	10.5015 PA	10.5015PA7035	10.5015PA/SW
	M63x1,5	12	17	70	50	10.6315 PA	10.6315PA7035	10.6315PA/SW
2	Pg 7	6	10	15	100		1007 PG	
	Pg 9	6	10	19	100		1009 PG	
	Pg 11	6	10	22	100		1011 PG	
	Pg 13,5	6	10	25	100		1013 PG	
	Pg 16	6	10	27	100		1016 PG	
	Pg 21	8	12,5	33	100		1021 PG	
	Pg 29	8	13	44,5	100		1029 PG	
	Pg 36	10	15	55,5	50		1036 PG	
	Pg 42	10	15,5	62,5	50		1042 PG	
	Pg 48	12	17	69,5	50		1048 PG	

Twisting sleeve

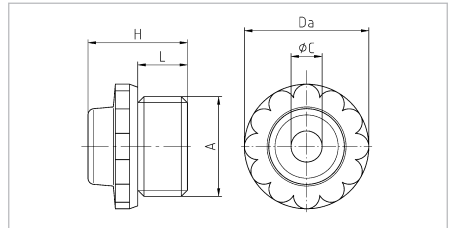
1xx MGG / 1xx GG

Configuration



Twisting sleeve Polyethylene PE-LD

Properties

for application in installation sectors without special requirements
 Temperature range -30°C / +90°C
 Protection grade IP54
 if assembled properly



Characteristics

A	ø C mm	$\frac{H}{L}$ L mm	H mm	Da mm		RAL 7035 light grey Part No. 
M12x1,5	3,5 - 6	8	15	15	200	112 MGG
M16x1,5	5 - 8,5	8	16	20	200	116 MGG
M20x1,5	7 - 10,5	10	19	23,5	200	120 MGG
M25x1,5	8,5 - 13	12	22	29,5	100	125 MGG
M32x1,5	13 - 16,5	14	24,5	37	50	132 MGG
M40x1,5	16 - 21,5	16	27,5	46	50	140 MGG
M50x1,5	22 - 35	18	31	56	10	150 MGG*
M63x1,5	24 - 43	20	38	69	10	163 MGG*
Pg 9	6 - 8	8,1	16,5	19	200	109 GG
Pg 11	7 - 10	8,9	17,5	21	200	111 GG
Pg 13,5	9 - 12	10,6	19,5	24	200	113 GG
Pg 16	9 - 14	10,8	20	27	100	116 GG
Pg 21	11 - 17	12,5	22,8	33	100	121 GG
Pg 29	18 - 24	16	24,8	45,5	50	129 G
Pg 36	25 - 32	19	30,2	56	25	136 G

* Construction different from drawing above

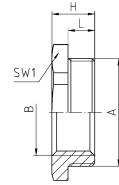
Configuration

Enlarger Polyamide PA6 GF30

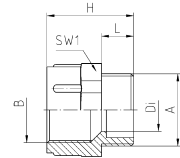
Properties

reduction of threaded or clearance holes to smaller thread sizes
 Temperature range -30°C / +100°C
 Protection grade dependent on the combination with other components




Design 1



Design 2*



Characteristics

A	B	L mm	SW1 mm	H mm		RAL 7035 light grey Part No.	 RAL 9005 jet black Part No.	
M16x1,5	M12x1,5	8	24	12	100	M16M12 PA	M16M12 PA/SW	
M20x1,5	M12x1,5	8	24	12	100	M20M12 PA	M20M12 PA/SW	
M20x1,5	M16x1,5	8	24	12	100	M20M16 PA	M20M16 PA/SW	
M25x1,5	M12x1,5	8	29	14	100	M25M12 PA	M25M12 PA/SW	
M25x1,5	M16x1,5	8	29	14	100	M25M16 PA	M25M16 PA/SW	
M25x1,5	M20x1,5	8	29	14	100	M25M20 PA	M25M20 PA/SW	
M32x1,5	M16x1,5	10	36	16	50	M32M16 PA	M32M16 PA/SW	
M32x1,5	M20x1,5	10	36	16	50	M32M20 PA	M32M20 PA/SW	
M32x1,5	M25x1,5	10	36	16	50	M32M25 PA	M32M25 PA/SW	
M40x1,5	M20x1,5	10	46	16	50	M40M20 PA	M40M20 PA/SW	
M40x1,5	M25x1,5	10	46	16	50	M40M25 PA	M40M25 PA/SW	
M40x1,5	M32x1,5	10	46	16	50	M40M32 PA	M40M32 PA/SW	
M50x1,5	M32x1,5	12	55	18	25	M50M32 PA	M50M32 PA/SW	
M50x1,5	M40x1,5	12	55	18	25	M50M40 PA	M50M40 PA/SW	
M63x1,5	M40x1,5	12	68	18	25	M63M40 PA	M63M40 PA/SW	
M63x1,5	M50x1,5	12	68	18	25	M63M50 PA	M63M50 PA/SW	
Pg 9	Pg 7	8	19	20,5	100	907 PA*	907 PA/SW*	
Pg 11	Pg 7	8	22	14	100	1107 PA	1107 PA/SW	
Pg 11	Pg 9	8	22	22,5	100	1109 PA*	1109 PA/SW*	
Pg 13,5	Pg 7	9	24	15	100	1307 PA	1307 PA/SW	
Pg 13,5	Pg 9	9	24	15	100	1309 PA	1309 PA/SW	
Pg 13,5	Pg 11	9	24	24	100	1311 PA*	1311 PA/SW*	
Pg 16	Pg 9	10	27	16	100	1609 PA	1609 PA/SW	
Pg 16	Pg 11	10	27	16	100	1611 PA	1611 PA/SW	
Pg 16	Pg 13,5	10	27	27	100	1613 PA*	1613 PA/SW*	
Pg 21	Pg 13,5	11	32	16	100	2113 PA	2113 PA/SW	
Pg 21	Pg 16	11	32	16	100	2116 PA	2116 PA/SW	
Pg 29	Pg 16	11	40	17	50	2916 PA	2916 PA/SW	
Pg 29	Pg 21	11	40	17	50	2921 PA	2921 PA/SW	
Pg 36	Pg 29	18	50	24	50	3629 PA	3629 PA/SW	

Enlarger

MxxMxxPA / xxxx PAzz EPg

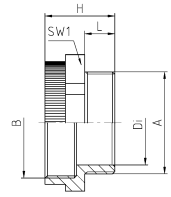
Configuration

Enlarger Polyamide PA6 GF30

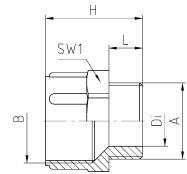
Properties

enlarger of threaded or clearance holes to larger thread sizes
 Temperature range -30°C / +100°C
 Protection grade dependent on the combination with other components



Design 1



Design 2



Characteristics

	A	B	L mm	SW1 mm	H mm	Da mm		RAL 7035 light grey Part No. 
1	M12x1,5	M16x1,5	8	20	20,5	7	100	M12M16PA
	M16x1,5	M20x1,5	8	24	20,5	11	100	M16M20PA
	M20x1,5	M25x1,5	8	30	21	15	100	M20M25PA
	M25x1,5	M32x1,5	8	37	23	19	50	M25M32PA
	M32x1,5	M40x1,5	10	45	25	26	50	M32M40PA
2	Pg 7	Pg 9	8	19	21	8,5	100	709 PA
	Pg 9	Pg 11	8	22	23	10	100	911 PA
	Pg 11	Pg 13,5	8	24	23	13,5	100	1113 PA
	Pg 11	Pg 16	8	27	24,5	12,5	100	1116 PA
	Pg 13,5	Pg 16	9	27	26	15	100	1316 PA
	Pg 16	Pg 21	9	32	29	16	100	1621 PA
	Pg 21	Pg 29	10	42	32	22,5	50	2129 PA
	Pg 29	Pg 36	11	53	35,5	30,5	25	2936 PA
	Pg 36	Pg 42	13	60	40,5	39,5	10	3642 PA
	Pg 42	Pg 48	13	65	41	45,5	10	4248 PA

Further information about our representatives abroad is available at

www.jacob-gmbh.de

Jacob

Jacob GmbH
Elektrotechnische Fabrik
Gottlieb-Daimler-Straße 11
D-71394 Kernen
Germany

Phone +49 7151 4011-0
Fax +49 7151 4011-49
jacob@jacob-gmbh.de
www.jacob-gmbh.de

03/2011