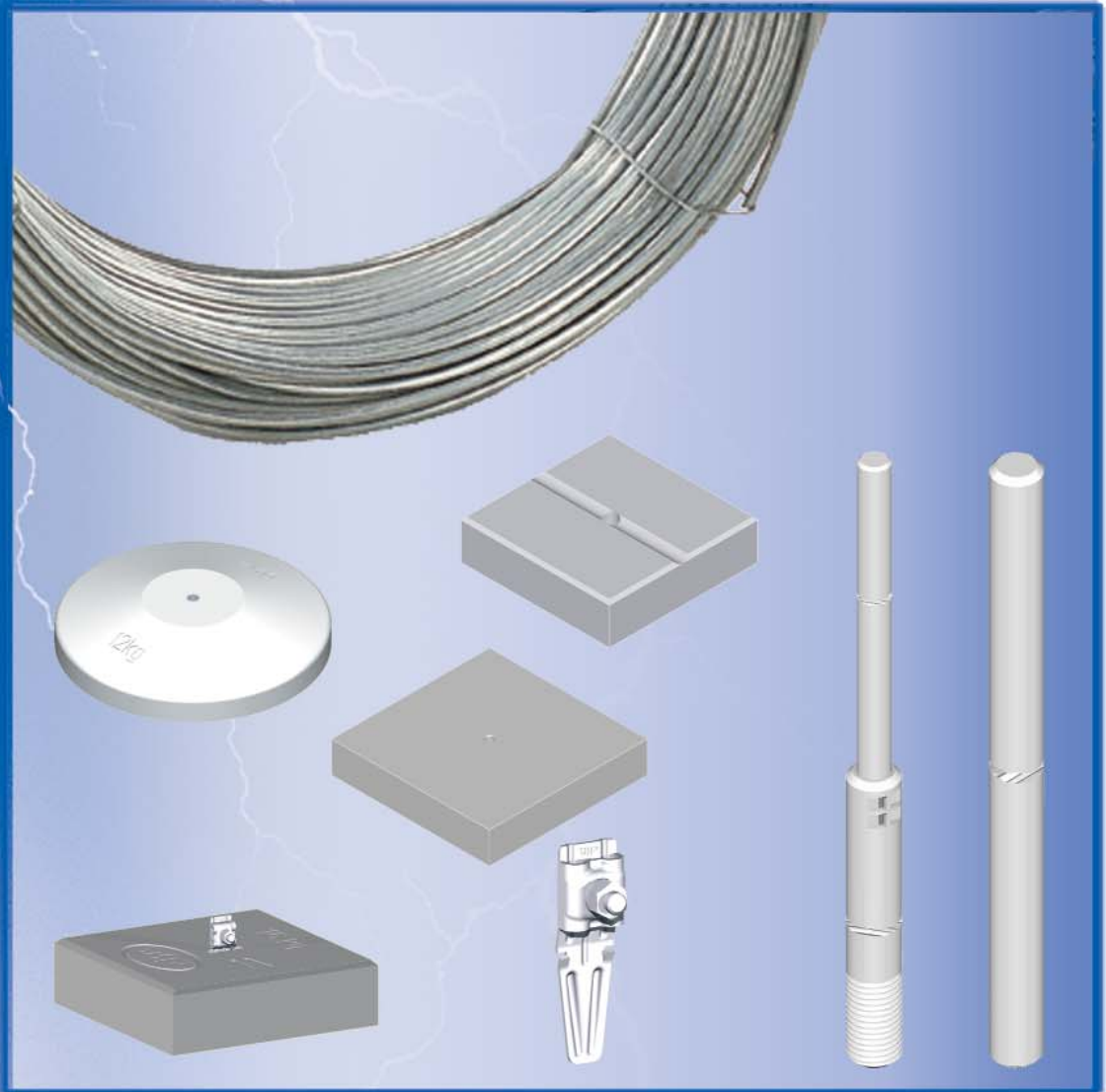


Conductions, Lightning protections



Wires for lightning protection and earthing systems

- different materials
- available in various dimensions

Round wire

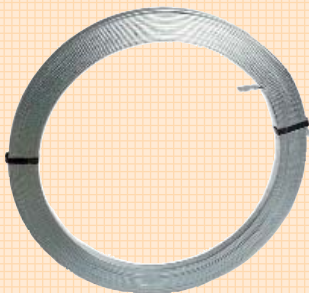


Round wire

Specification	Size	Weight/m	qty/pack	Order no.
Steel, hot galvanized Z 300 DIN 48 801	ø 8	0.40 kg	50	100 008
Steel, hot galvanized Z 300 DIN 48 801	ø 10	0.62 kg	50	100 010
Aluminum AlMgSi 0,5 medium hard F 17	ø 8	0.135 kg	20	100 018
Aluminum AlMgSi 0,5 soft F 12	ø 8	0.135 kg	20	100 019
Aluminum DIN 48 801 soft F 6	ø 10	0.212 kg	20	100 020
E copper medium hard F 25	ø 8	0.45 kg	50	100 028
E copper soft F 22	ø 8	0.45 kg	50	100 029
Stainless steel 1.4301 (304)	ø 8	0.40 kg	50	100 011
Stainless steel 1.4301 (304)	ø 10	0.62 kg	50	100 012
Stainless steel 1.4571 (316)	ø 8	0.40 kg	50	100 014
Stainless steel 1.4571 (316)	ø 10	0.62 kg	50	100 015
Steel with PVC coating	ø 10/ø 13	0.68 kg	50	100 013
Steel with PVC coating	ø 8 / ø 11	0.44 kg	50	100 121
ISO - Fugal lightning arrester wire made of aluminum alloy AlMgSi0,5 with halogen-free plastic coating	ø 8 / ø 11	0.20 kg	50	100 123

Varnished wire on request. Color scale see page

Bands



Bands

Specification	Size	Weight/m	qty/pack	Order no.
Steel, hot galvanized DIN 48 801 Z 300 (50 kg ring)	30 x 3.5	0.85 kg	50	100 335
Steel, hot galvanized DIN 48 801 Z 300 (25 kg coil)	30 x 3.5	0.85 kg	25	100 335k
Steel, hot galvanized DIN 48 801 Z 500 (50 kg coil)	30 x 3.5	0.85 kg	50	100 336
Steel, hot galvanized DIN 48 801 Z 500 (25 kg coil)	30 x 3.5	0.85 kg	25	100 336k
Steel, hot galvanized DIN 48 801 Z 300 (50 kg coil)	40 x 4.0	1.50 kg	50	100 440
Steel, hot galvanized DIN 48 801 Z 300 (50 kg coil)	40 x 5.0	1.57 kg	50	100 540
Steel, hot galvanized DIN 48 801 Z 300 (50 kg coil)	20 x 2.5	0.40 kg	50	100 225
Stainless steel Niro 1.4301 (304)	30 x 3.5	0.85 kg	50	100 114
Stainless steel 1.4571 (316)	30 x 3.5	0.85 kg	50	100 112
E copper medium hard	20 x 2.5	0.45 kg	run.m.	100 118

Ropes



Ropes

Specification	Size	Weight/m	qty/pack	Order no.
Steel/galvanized DIN 3060	ø 10	0.380 kg	run.m.	100 030
Aldrey rope, DIN 48 201	50 mm ²	0.135 kg	run.m.	100 058
E copper polished	50 mm ²	0.438 kg	run.m.	100 033
E copper polished	70 mm ²	0.597 kg	run.m.	100 034
E copper polished	95 mm ²	0.846 kg	run.m.	100 035
E copper polished	120 mm ²	1.061 kg	run.m.	100 036
E copper tinned	50 mm ²	0.438 kg	run.m.	100 037
E copper tinned	70 mm ²	0.597 kg	run.m.	100 038
E copper tinned	95 mm ²	0.846 kg	run.m.	100 039
E copper tinned	120 mm ²	1.061 kg	run.m.	100 040
Copper with lead coating	50 mm ²	0.820 kg	run.m.	100 024
Stainless steel 1.4401 (316)	ø 8	0.250 kg	run.m.	100 041
Stainless steel 1.4401 (316)	ø 10	0.380 kg	run.m.	100 042
NYY-I plastic earthing rope E copper 1 kV	50 mm ²	0.615 kg	run.m.	100 043

Interception devices

J. Pröpster Optimal Interception Rods with Interception Tip for interception systems in accordance with VDE 0185 part 1 § 5 and following

4 technical advantages that convince the experts

- optically pleasing – optimal static design – great mechanical strength
- ideal coordination of protective effects and material requirements
- minimized wind resistance and maximized protection
- reduced load pressure on roof covering and insulation

Specification	Length mm	Qty/pack.	Order no.
Aluminum \varnothing 16 mm with M16 thread	1500	10	103 111
and interception tip \varnothing 10 mm, 1 m long	2000	10	103 112
longer than 2500 mm with counter nut	2500 *)	10	103 113
	3000 *)	10	103 114

Interception rods

for flat roofs and the protection of roof installations based on **DIN 48 802 A1**

Specification	Length mm	Qty/pack	Order no.
Interception rod \varnothing 16 mm made of Aluminum AlMgSi with M16 thread	1000	10	103 100
Aluminum AlMgSi with M16 thread	1500	10	103 150
Aluminum AlMgSi with M16 thread	2000	10	103 200
longer than 2500 mm with counter nut	2500 *)	10	103 250

*) only with additional, insulated bar holders

Concrete base for flat roofs to protect roof installations.

Specification	Weight	Qty/pack	Order no.
Concrete base			
with M16 female thread to attach interception rods	12 kg	1	103 103
	16 kg	1	103 101
	20 kg	1	103 110
	25 kg	1	103 118

Spacer plate

Specification	size/mm	Qty/pack	Order no.
Spacer plate for concrete base to protect roofing material.	\varnothing 445	1	103 102
Neutral with all roofing materials	300 x 300		

Optimal interception rod with thread



Threaded interception rod



Concrete base



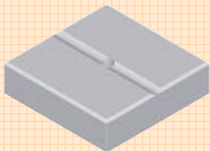
Spacer plate



Optimal interception rod with cone



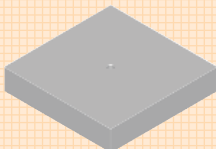
Concrete base



Threaded interception rod



Concrete base



Spacer plate



Interception rods

for flat roofs and the protection of roof installations based on **DIN 48 802 A1**

Specification	Length mm	Qty/pack.	Order no.
Aluminum \varnothing 16 mm with cone	1500	10	103 151
and interception tip \varnothing 10 mm, 1 m long	2000	10	103 152
	2500 *)	10	103 153
	3000 *)	10	103 154

fits concrete base 300 x 300 x 80 mm with cone (order no. 103 149) and, if needed, additional concrete base 300 x 300 x 80 mm with through hole (order no. 103 155)

Concrete base with cone for flat roofs to protect roof installations optimally fits interception rod with cone (order no. 103 151 and 103 152)

Specification	Weight	Qty/pack	Order no.
Concrete base 300 x 300 x 80 mm with cone	16 kg	1	103 149
Concrete base 300 x 300 x 80 mm with cone	16 kg	1	103 155

Interception rods

for flat roofs and the protection of roof installations based on **DIN 48 802 A1**

Specification	Length mm	Qty/pack	Order no.
Interception rod \varnothing 10 mm made of Aluminum AlMgSi with M10 thread	500	10	103 147
Aluminum AlMgSi with M10 thread	750	10	103 148
Aluminum AlMgSi with M10 thread	1000	10	103 124
Interception rod \varnothing 10 mm made of Stainless steel with M10 thread	1000	10	103 106
Stainless steel with M10 thread	1200	10	103 107

Additional length on request

Concrete base for flat roofs to protect roof installations.

Specification	Weight	Qty/pack	Order no.
Concrete base 300 x 300 x 60 mm with M10 female thread	12 kg	1	103 104
Concrete base 300 x 300 x 80 mm with M10 female thread	16 kg	1	103 146

Spacer plate for square concrete base

Specification	Size	Qty/pack	Order no.
Spacer plate for concrete base to protect roofing material. Neutral with all roofing materials	300 x 300 mm	1	103 188

Interception rod in accordance with DIN 48 802 ø16 with tapered ends.

Specification	Length mm	Qty/pack	Order no.
Steel hot galvanized ø16 mm	500	10	100 500
Steel hot galvanized ø16 mm	750	10	100 750
Steel hot galvanized ø16 mm	1000	10	101 000
Steel hot galvanized ø16 mm	1200	10	101 200
Steel hot galvanized ø16 mm	1500	10	101 500
E copper ø16 mm	750	10	100 755
E copper ø16 mm	1000	10	101 005
E copper ø16 mm	1200	10	101 205
E copper ø16 mm	1500	10	101 505
Stainless steel ø16 mm	750	10	102 755
Stainless steel ø16 mm	1000	10	102 005
Stainless steel ø16 mm	1200	10	102 205
Stainless steel ø16 mm	1500	10	102 505
Aluminum AlMgSi ø16 mm	500	10	102 500
Aluminum AlMgSi ø16 mm	750	10	102 750
Aluminum AlMgSi ø16 mm	1000	10	102 000
Aluminum AlMgSi ø16 mm	1200	10	102 200
Aluminum AlMgSi ø16 mm	1500	10	102 550

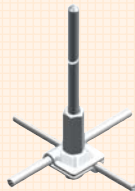
Other lengths on request.

Aluminum-Interception-Tip ø 10 mm with thread M10, for direct connection to MULTI clamp, by T- and cross connection.

Specification	Length	Qty/pack	Order no.
Aluminum AlMgSi 0,5 ø 10 mm	250 mm	10	103 158
mit Innengewinde M10	500 mm	10	103 121
	750 mm	10	103 122

Interception-Tip in stainless steel (304) on request.

Example of application:



Mushroom-shaped interceptor

as interceptor tip for flat roofs capable of carrying persons and vehicles

Specification	Size	Qty/pack	Order no.
Aluminum/steel - galvanized	ø 8-10	10	2040

Distance bottom edge clamp/
bottom edge mushroom interceptor 50-60 mm

Flat band design on request.

Interception tip for screwing on conductor ends

Specification	Size	Qty/pack	Order no.
Aluminum with stainless steel (304) bolt M6 x 8	ø 8	100	1252
Copper alloy with copper bolt M6 x 8	ø 8	100	1253

Interception rod



Aluminum-Interception-Tip



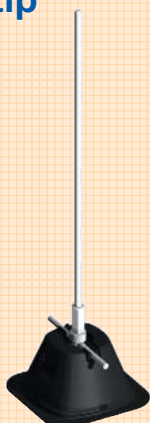
Mushroom-shaped interceptor



Interception tip



Interception tip with base

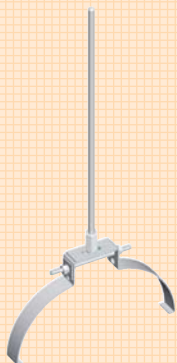


Interception tip with base for flat roofs; to protect small roof installations, e.g. ventilation systems. For installation along the conductor.

Specification	Qty/pack	Order no.
Interception rod with base	1	103 125

consists of:
plastic sheathing (same as ÖKO support), but with 2 kg frost resistant concrete filling. Contact clamp for \varnothing 8 mm interception wire and \varnothing 10 mm aluminum interception tip; 1.0 m total length.

Interception rod

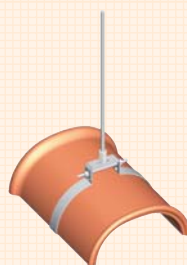


Interception rod with roof conductor holder (size 200 - 240 mm)

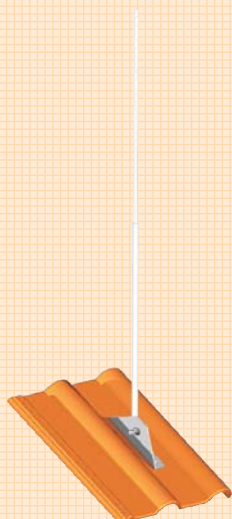
Specification	Length	Qty/pack	Order no.
Roof conductor in Stainless steel (304) , Interception rod Aluminum \varnothing 10 mm	1050 mm	1	1255

Another length on request.

Example of application:



Interception rod



Interception rod with roof conductor support.

Specification	Qty/pack	Order no.
Roof conductor in Stainless steel (304)	1	916 794

By order, we need Roof.type and colour.

Optimal interception rod **Aluminum** \varnothing 10 mm see at page 9.

